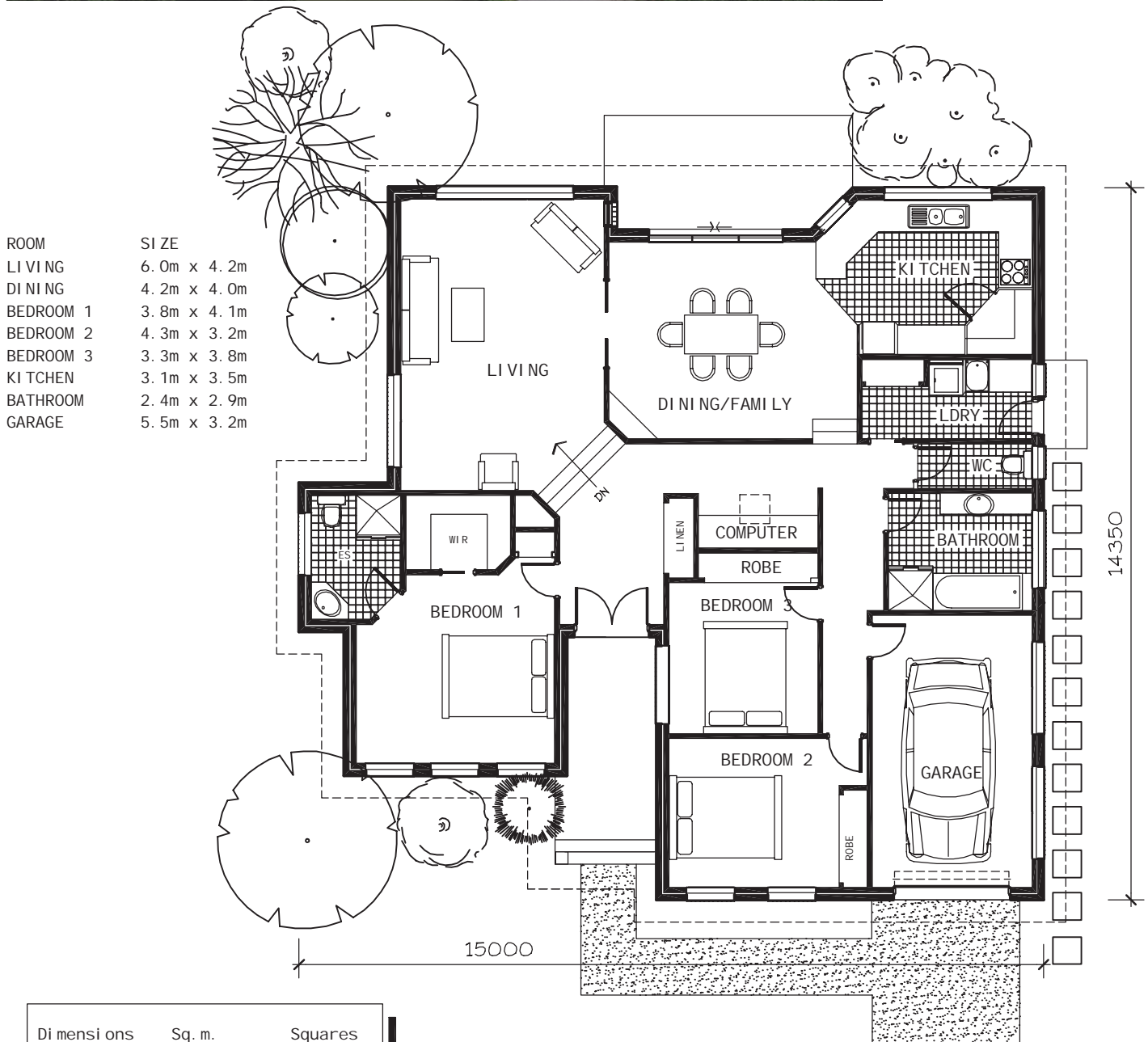




**D'well**

designed well, delivered well

D'well Homes  
 1/92 Central Ave  
 Derwent Park  
 Tasmania 7009  
 Ph: 03 62 72 1911  
 FAX: 03 62 72 0611



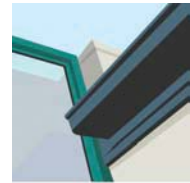
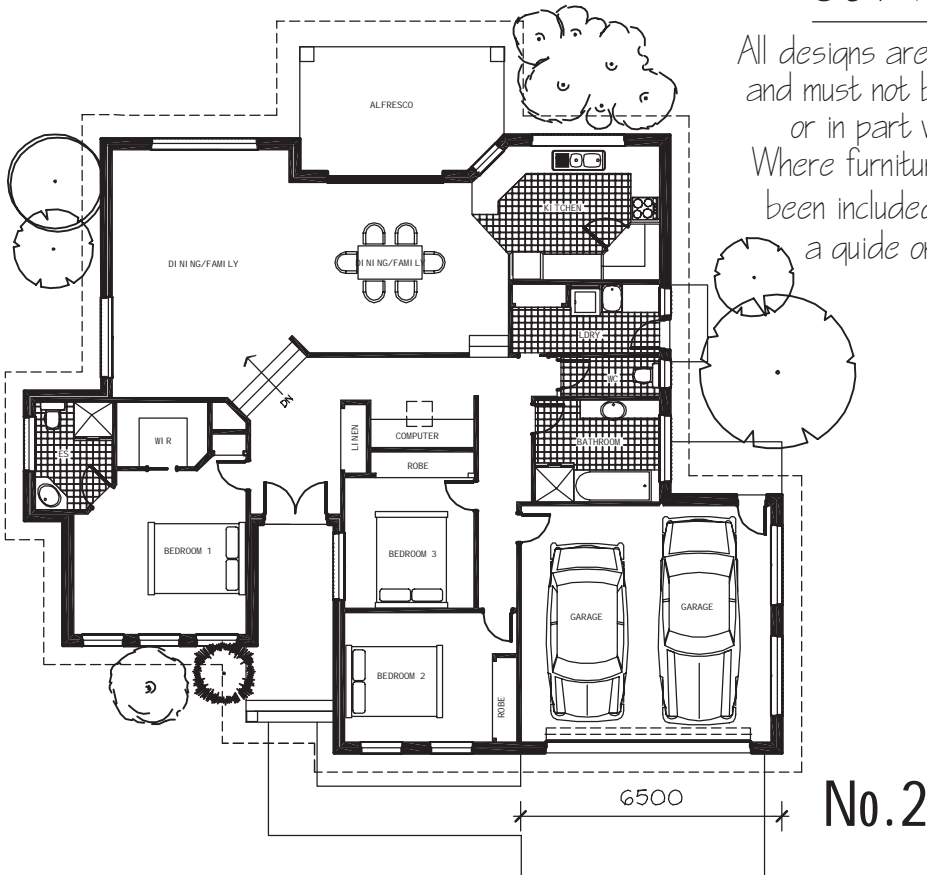
ROOM	SIZE
LIVING	6.0m x 4.2m
DINING	4.2m x 4.0m
BEDROOM 1	3.8m x 4.1m
BEDROOM 2	4.3m x 3.2m
BEDROOM 3	3.3m x 3.8m
KITCHEN	3.1m x 3.5m
BATHROOM	2.4m x 2.9m
GARAGE	5.5m x 3.2m

Dimensions	Sq. m.	Squares
Floor area	154 sq m	16.60 sqs
Porch	8 sq m	0.86 sqs
Garage	21 sq m	2.26 sqs
Total area	183 sq m	19.72 sqs

# Alicia Collection No. 1

# COPYRIGHT CONDITIONS

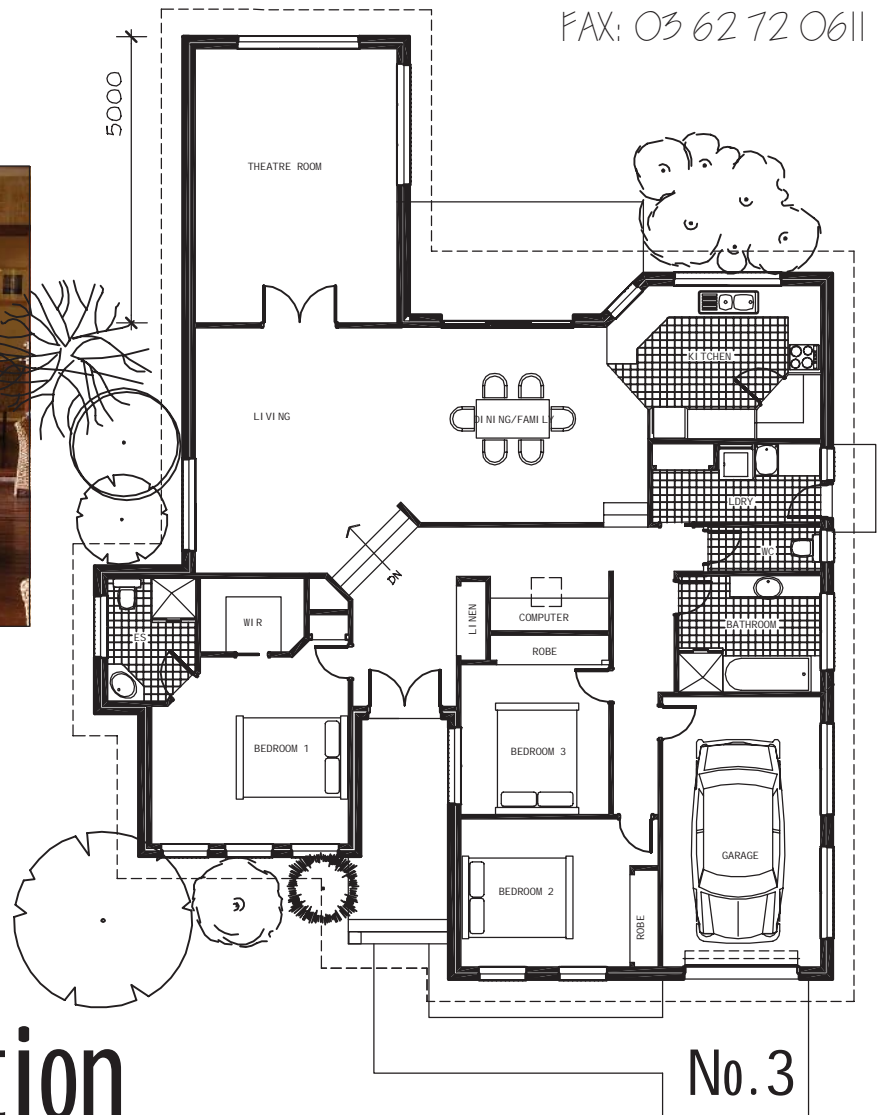
All designs are the property of D'well Homes Pty Ltd and must not be used, reproduced or copied, wholly or in part without permission of the Company. Where furniture, fixtures, paths, pergolas etc have been included in this drawing, they are shown for a guide only. Floor plans are indicative only.



**D'well**  
designed well, delivered well

D'well Homes  
1/92 Central Ave  
Derwent Park  
Tasmania 7009

Ph: 03 62 72 1911  
FAX: 03 62 72 0611



# Alicia Collection

No. 3